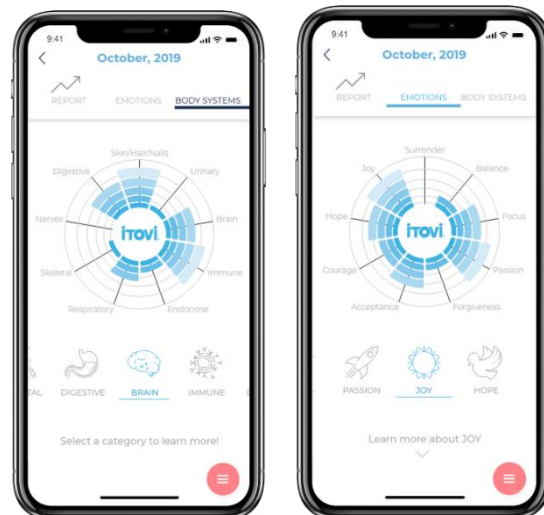
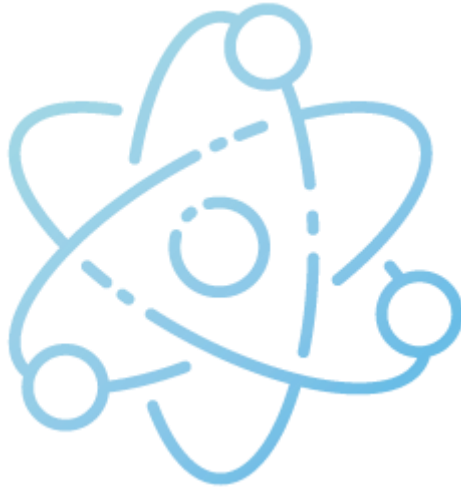


iTOVi Technology



The iTOVi Scanner combines galvanic skin response (GSR) electrodes, a pressure sensor, temperature readings, and Bluetooth technology to measure small changes in the electrical conductivity of the skin. Keep reading to learn more about how iTOVi has combined these technologies to create the revolutionary iTOVi Scanner!



### **The Science**

Our bodies are highly complex chemical, structural, and energetic masterpieces with trillions of components and millions of processes and cycles. The elegant symphony of electrical signatures that occurs within each of us every day to keep our body in a state of well-being highlights our complexity and individuality. These electrical signatures relate and respond to your personal temperature, heartbeat, your current state of health, and even the workings of your unique mind.

So, the electricity in each person tells a different story of the conscious and unconscious bodily processes of that individual. This bio-electricity, and the individualized information we can learn from it, is the foundation of the iTOVi Scanner.



### **The Stimulus**

Continually on the move, our bodies are changing, pivoting, and adjusting to keep us in a state of health and homeostasis. Internal and environmental stimulants and stressors, both useful and harmful, are some of the leading causes of the changes in electrical patterns within the body. GSR technology traces these occurrences in the body after presenting a unique stimulus.

Knowing that the body communicates with itself in an electrical language, iTOVi uses a subtle electrical stimulus, the exact electrical frequency of a natural wellness product, in order to test the body's biological response.

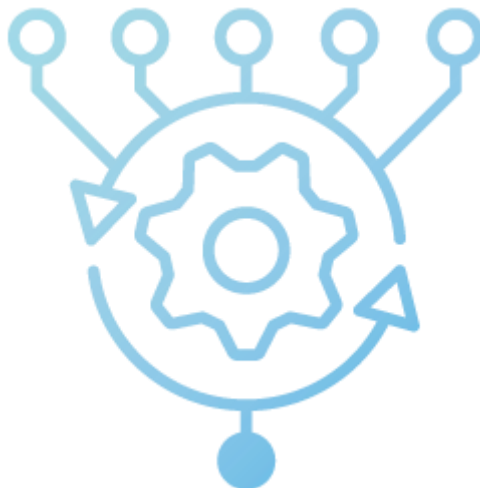


### The Response

For centuries, reactions from the body have been observed and recorded using a variety of methods, including pulse, eye dilation, breathing patterns, and more. These reactions, when carefully recorded and verifiably connected to bodily processes, can be used to understand the body and how it reacts to certain stimuli.

iTOVi uses a Bluetooth radio antenna to present the aforementioned stimulus and then uses GSR to measure the reactionary change electrical conductivity of the skin, identifying the most pronounced changes.

All the data from the GSR electrodes is then sent to the iTOVi Algorithm for interpretation.



### Algorithm

After an iTOVi hand scan is complete, the data is processed through iTOVi's complex proprietary algorithm, giving us a deeper look at the small, yet quantifiable changes in the conductivity of the skin. The product frequencies that correspond to the greatest changes in skin conductivity are considered to be the most important.



### **Report**

Once the iTOVi scan is complete, a report will show you the results of your scan in the iTOVi app. The scan results are listed in priority, based on the product frequencies that prompted the strongest changes in skin conductivity.

Every report is permanently saved under the client name in the app. You can also choose to email or text the report to the client through the iTOVi app, giving you a convenient way to share the scan results, save client information, and plan your follow-up with them.

The iTOVi nutrition scanner is an advanced and powerful tool to help you grow your business and learn more about your overall wellness.